



MOSAICA

Business Intelligence
Software for Corporate
Responsibility

Brand & Retailer
Brochure



Data-Driven Insights At Your Fingertips

What if your enterprise solutions met all your corporate responsibility ambitions?

Modern responsible sourcing strategies demand sophisticated tools to enable easier, faster & better decision making:



Monitoring Use of Responsible Materials & Progress Against Targets



Managing Due Diligence Processes for Certified Supply Chains



Integrating Commercial & Management Decisions with Real-time Data

Mosaica from Elementaly brings your data together to create unified, actionable insights in real time, eliminating guesswork, time consuming data analyses and out-of-date data.

Mosaica helps you spend less time managing data and more time delivering results.



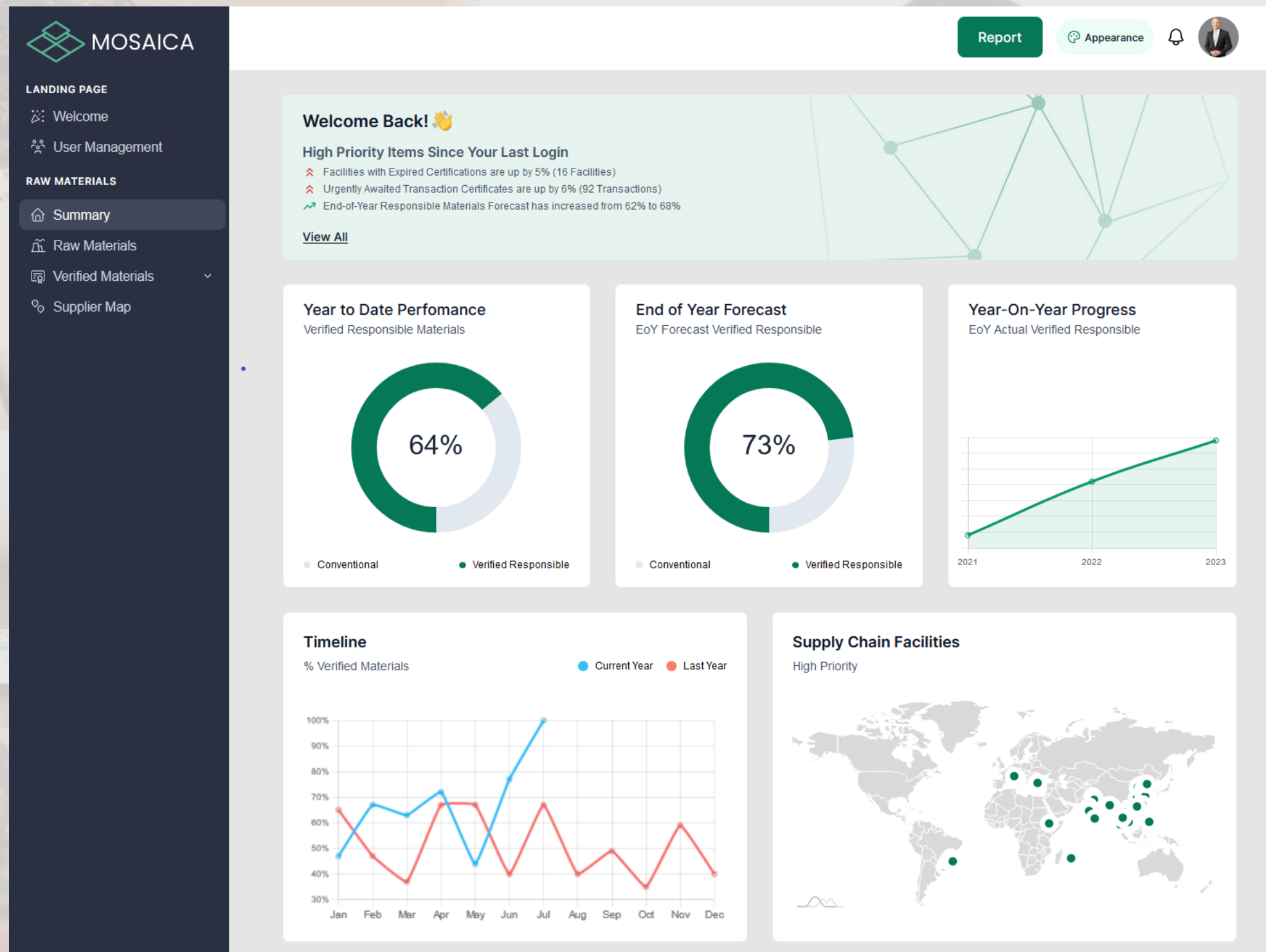
Integrating Cross-Organisation Decision Making

Automated data analyses for tracking and communicating responsible sourcing progress

Summary Dashboard (Right):

By automating the measurement of your organisation's material footprint, we can:

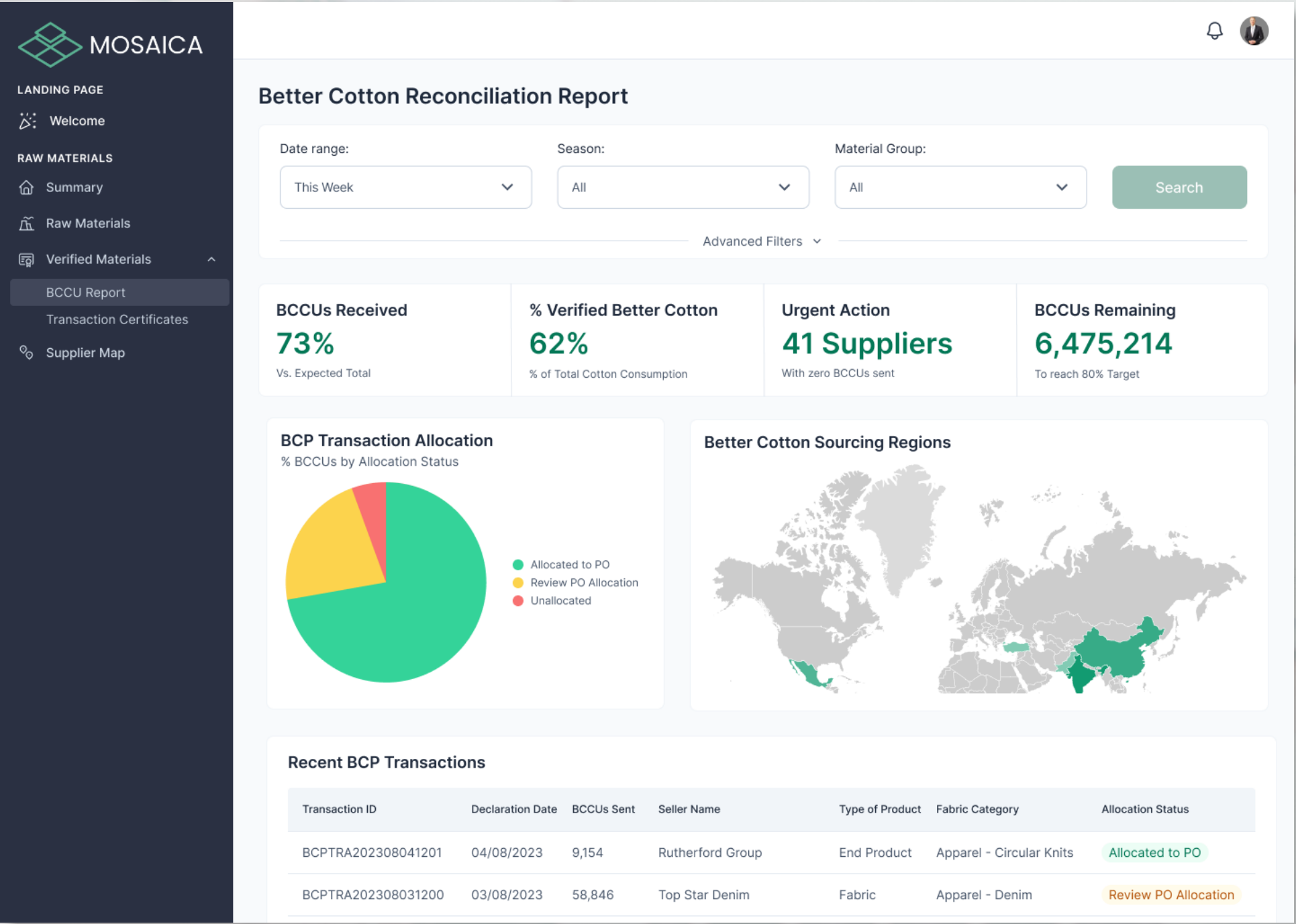
- Track business critical KPIs through access to real-time* data.
- Improve the accuracy, reliability and accessibility of internal & external reporting.
- Break down silos between teams.
- Reduce administration burdens.



*Real-time or high frequency data requires a suitable connection to commercial systems (PO, ERP, PLM) for data extraction.

Dedicated Better Cotton Dashboards

Performance tracking and forecasting for Better Cotton



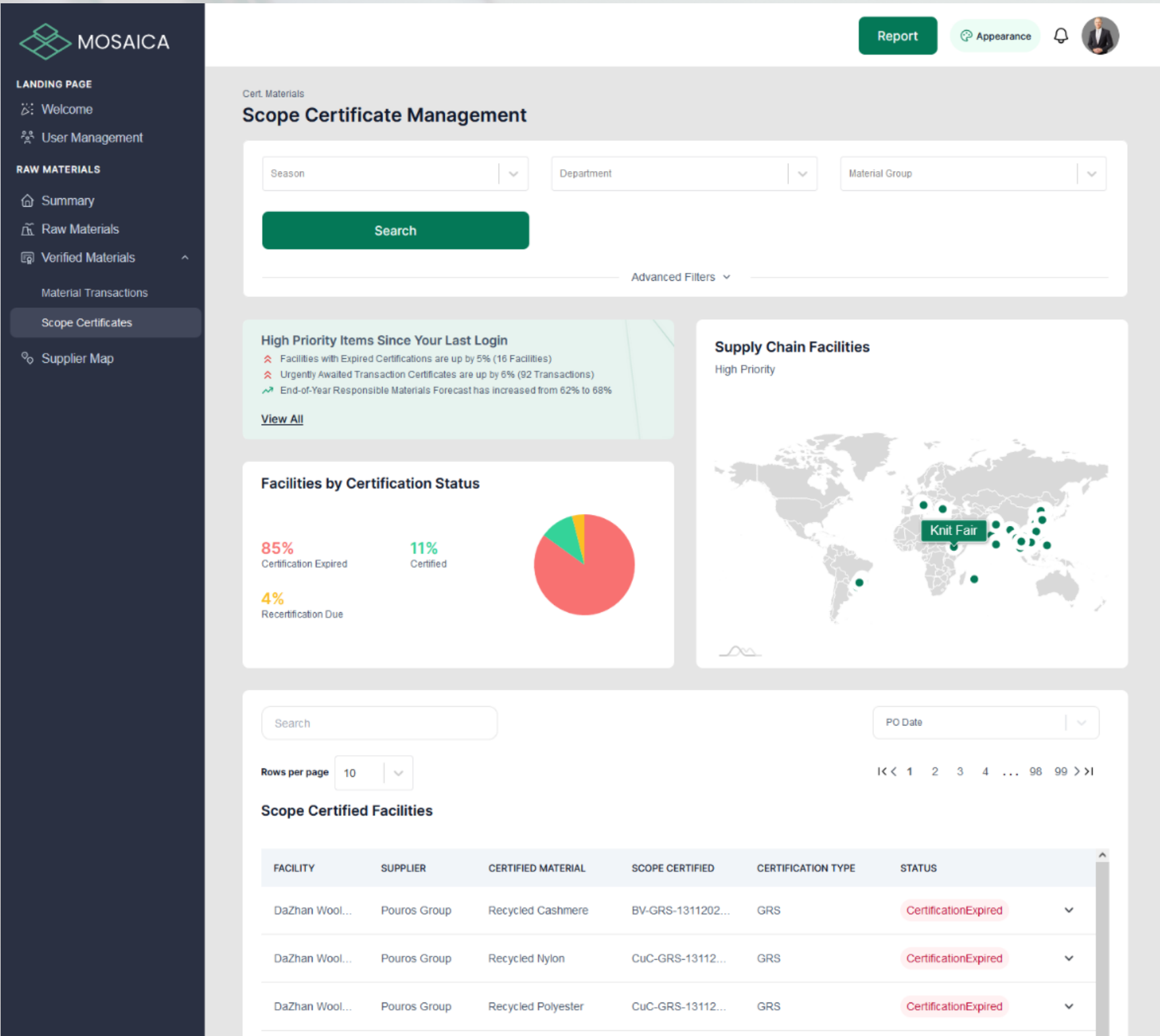
Better Cotton Reconciliation Report (Left):

By automating the collection, analysis and allocation of your Better Cotton Claim Units ('BCCUs') you can keep up-to-date on your cotton sourcing strategy:

- Track total BCCUs vs. those expected from your material consumption calculations.
- Focus attention on high-priority suppliers to close gaps more quickly.
- Give teams and departments a customised picture of their performance and outstanding actions.

Managing Certified Supply Chains

At-a-glance chain of custody status of your supply chain



Supply Chain Certification (Left):

Using your existing data systems and policies, Mosaica can map out your direct suppliers, factories and other supply chain actors.

Use this information to keep up-to-date on the status of certifications and other industry accreditations in your supply chain:

- Automate the collection and management of scope certificates and other evidence for industry accreditation programmes.
- Track the proportion of your supply chain that is certified, and get warnings for expiring and expired certifications.
- Set automated reminders for upcoming expired certifications.
- Compare factory & supplier orders against the full production of your organisation to help direct priorities.

Tracking Verified Responsible Materials

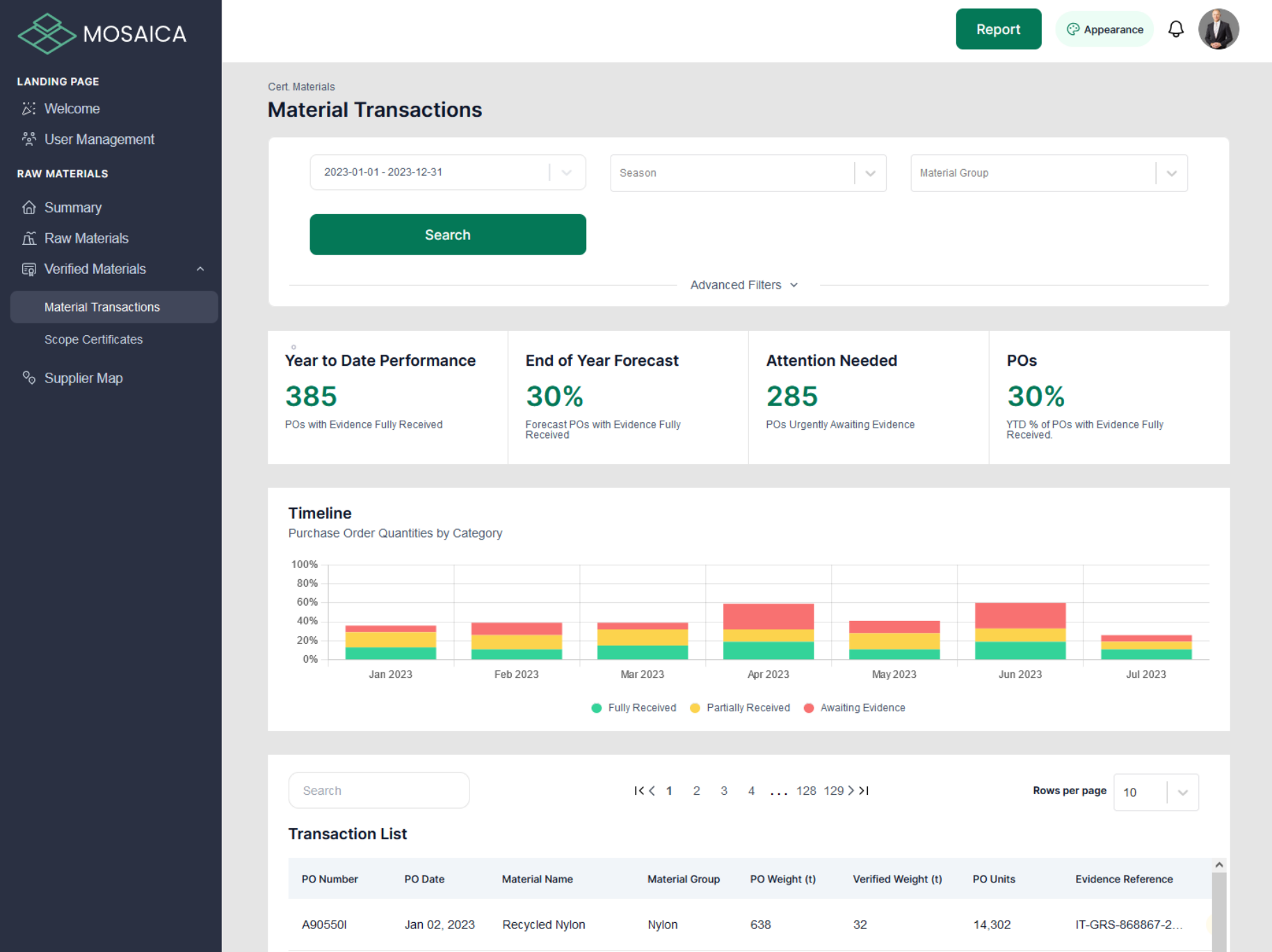
Managing chain of custody transaction data has never been easier - fully integrated with your commercial systems

Transaction Certification (Right):

Based on real order or production data, Mosaica keeps track of supply chain evidence for individual transactions.

Strengthen and automate your existing due diligence processes while reducing administrative burdens of collecting, sorting and validating evidence:

- Automate the collection and management of transaction certificates and other evidence for industry accreditation programmes.
- Track the proportion of orders that are fully compliant with your due diligence processes, as well as those that fall short.
- Match your due diligence processes to specific orders, styles or stock-keeping-units for up-to-date risk management reviews.
- Keep teams and suppliers up to date on performance and set automated reminders for missing evidence.



Contact Us

Interested in learning more?
We would be happy to help.

If you are interested in any of the features of Mosaica or whether Elementaly can help your organisation with tracking, analysing, and communicating corporate responsibility data, we would be pleased to find out more.

Mosaica has been designed to meet the needs of modern corporate responsibility teams within the apparel & fashion sector. We are happy to provide more information on features, pricing and data system minimum requirements.

For more details, please contact Dan.Davies@Elementaly.org or use any of the contact details listed below. We would be delighted to hear from you.



+44 (0)20 3637 7375



Info@Elementaly.org



71 - 75 Shelton Street
London
WC2H 9JQ
United Kingdom

